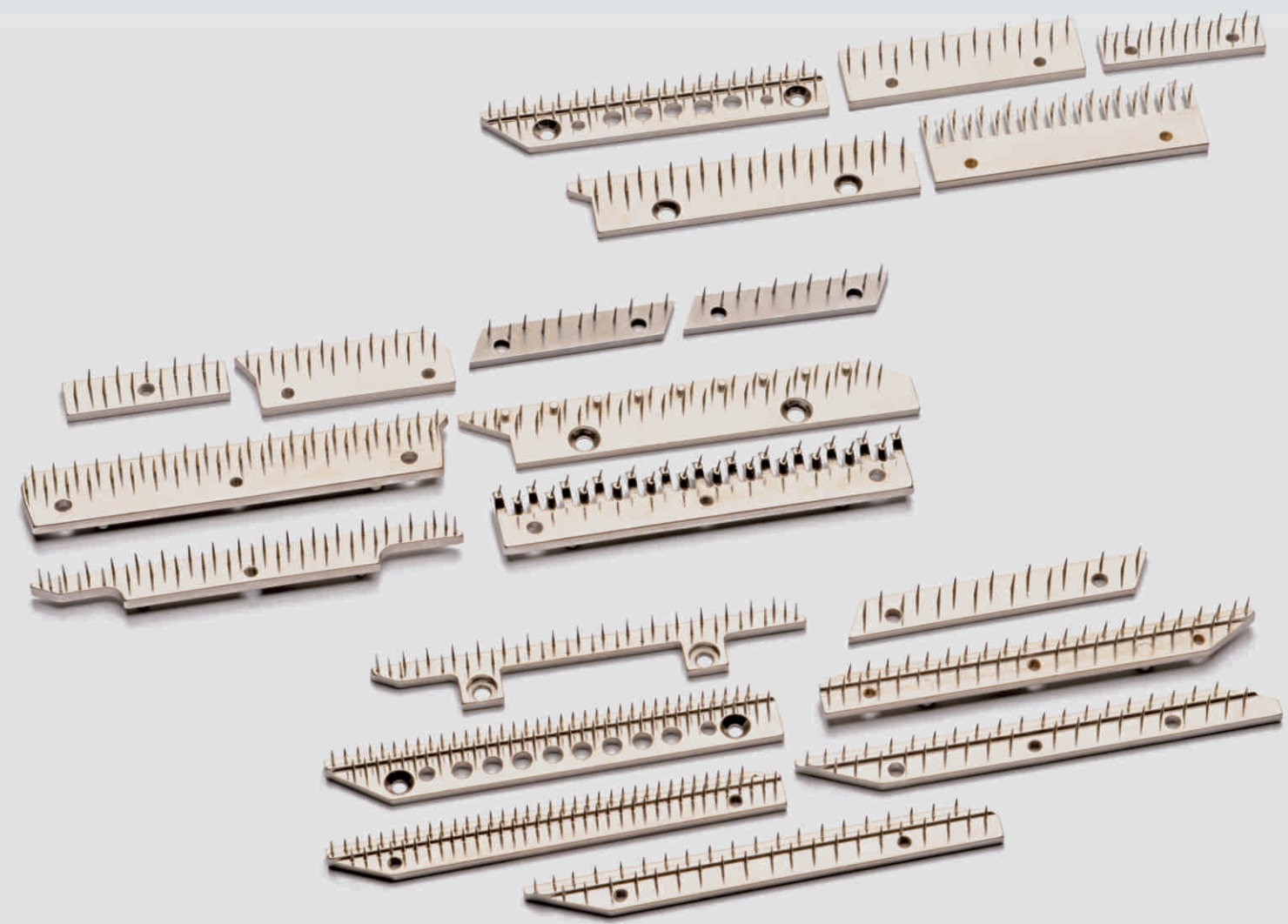


### TECO HISTORY

Founded in 1971 in the name of PINSTERN ENGINEERING WORKS by a group of businessmen with the intention to cater the requirement of spare parts for various types of Textile Processing Machinery and established in the year 1990 by the name of THAKER ENGINEERING CO. PVT. LTD. (an ISO 9001:2015 certified company) comprising well equipped machine tools straddling across 19000 sq. ft area located at Vadodara, Gujarat. INDIA.



### Pinstern Engineering Works



## ABOUT TECO

Thaker Engg. Co. Pvt. Ltd. situated at Vadodara, Gujarat, India since 1991 with more than 1,65,000 square feet manufacturing facilities at 2 locations. With hard work, outstanding quality and dependable services we have expanded and have tripled our manufacturing capabilities within a short span.

An ISO 9001:2008 registered company, TECO considers quality and service needs of our customers as our primary goal. Our quality department utilizes the most up-to-date equipment including CMM to ensure that our customers receive the best quality they expect and deserve.

Our core competence lies in the production of wide range of products like chains, clips & pin plates of various types of STENTER MACHINES. We are approved vendors for leading Stenter Machine manufacturers in India & abroad.

Our age long focus on customer satisfaction has led us to develop stringent quality standards for In-process & finished goods testing. Our brand "TECO" has deservedly earned a fine reputation not only amongst Stenter Machine manufacturers but also direct users alike, for its reliability and durability.

Besides catering to the needs of Indian customers we also have established ourselves world-wide.



#### OUR VISION

To provide reliable business solutions to customers to make them market trend setter and also keep them more free & happy !!

#### OUR QUALITY POLICY

We all at TECO will continually improve the quality & services of our products and systems to meet the requirement of our customers and satisfy them by delivering the defect free products on time, every time.

#### OUR MISSION

To become a market leader with a turnover of 100 Cr by 2025

#### OUR CORE VALUES

- Ambition to be a market leader
- Honesty & Loyalty
- Team work to accomplish our goals
- Responsibility
- Sharing



**THAKER**  
Engineering Co. Pvt. Ltd.



### DIE CASTING

Manufacturer of aluminum die casting components for the textile, electrical and general industries since 2005. Total 04 die cast machines ranging in size from 80 Tons to 180 Tons clamping pressure are installed with the casting weight (part weights) ranges from a few grams to 800 grams per pc.

### INJECTION MOULDING

From small parts to large parts, from even the simplest of parts to the extremely complex parts, when it comes to plastic injection molding, we do it all. TECO has been the reliable source for Plastic Injection Molding needs for customers all over India and abroad as well. TECO can beat any foreign competitor when it comes to the plastic injection molding needs.

### CNC MACHINING

TECO offers a complete line of machining capabilities to meet your every need including CNC machining & turning.

### SHEET METAL PROCESS

TECO is a well-organized firm that deals in manufacturing premium quality of Sheet Metal Press Components. As a prominent Manufacturer of Sheet Metal Press Components, you get efficient, durable, rust resistance products that are carefully tested on varied parameters and norms. Our quality assured Sheet Metal Press Components are suitable in various industries like Textile, Automotive, General Engineering, etc. So far, we have numerous buyers, who appreciate our ranges of Sheet Metal Press Components as these are available in bulk quantity, in order to meet the demands of clients on time. Thus, our timely delivery and the best customization facility have accredited us as one amidst the remarkable Manufacturers of Sheet Metal Press Components from India & abroad as well.

For more than two decades we have worked with our customers understanding their needs and developing effective solutions. We invite you to visit our facility and meet our staff. We look forward to the opportunity to be of service to you by providing the continued dedication to excellence, that is the ultimate goal of TECO.

We stand behind our products and our services. Our people are committed to deliver quality products at competitive prices every time. Proud to be an INDIAN based Lean Manufacturer, that adds value-added services.

### OUR SERVICES



**ARTOS / BABCOCK**



**AR 01**  
Stenter Clip with Roller Feeler



**AR 02**  
Combined Pin & Clip with Roller Feeler  
(Fastening of Pin Plate with 2 Screws)



**AR 03**  
Combined Pin & Clip With Roller Feeler  
(Fastening of Pin Plate with Rapid Lock)



**AR 04 - Pin Link (long)**  
A- Fastening of Pin Plate with 2 Screws  
B- Fastening of Pin Plate with Rapid Lock



**AR 05 Pin Link (Short)**  
A- Fastening of Pin Plate With 2 Screws  
B- Fastening of Pin Plate With Rapid Lock




**AR 06**  
Pin Link with Pin Off Protection Device  
(Fastening of Pin Plate with 2 Screws)



**AR 07**  
Pin Link With Pin Off Protection Device  
(Fastening of Pin Plate with Rapid Lock)



**AR 08**  
Pin Off Protection Device

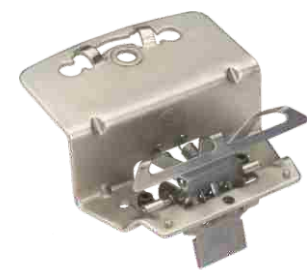


**AR 09**  
Pin Link short (Metal)  
(Fastening of Pin Plate with 2 Screws)

**ARTOS / BABCOCK**



**AR 10**  
Pin Link Long (Metal)  
(Fastening of Pin Plate with Rapid Lock)



**AR 11 Pin Link long (Metal)**  
with Pin Off Protection Device (Fastening  
of Pin Plate with Rapid Lock)



**AR 12**  
Pin Link for Carpet



**AR 13**  
Pinplate Carrier  
(Fastening of Pin Plate With 2 Screws)



**AR 14**  
Pinplate Carrier  
(Fastening of Pin Plate with Rapid Lock)



**AR 15**  
Complete Transport Chain with  
Sintered Sliding Pieces (Small riveted)



**AR 16**  
Complete Transport Chain With Synthetic  
Sliding Pads & Bushes (Lubrication free)



**AR 17**  
Complete Transport Chain With Sintered  
Sliding Pieces(Small Press Fitted)



**AR 18**  
Complete Transport Chain With Synthetic  
Sliding Pads & Impulse Lubrication System

**ARTOS / BABCOCK**



**AR 19**  
Connecting Link (Lube Type)



**AR 20**  
Connecting Link with Synthetic Bushes  
(Lubrication Free)



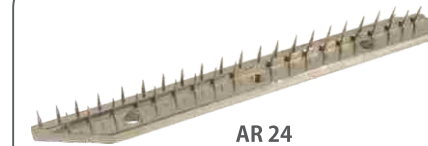
**AR 21**  
Chain Bolt



**AR 22**  
Safety Pin



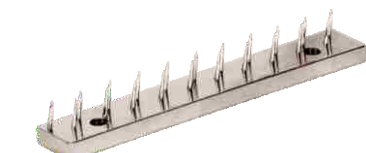
**AR 23**  
Transport Chain (Vertical) with Synthetic  
Sliding Pads, Synthetic Bushes & Pin Off  
protection device (Lubrication Free)



**AR 24**  
Pin Plate (39 Pins)



**AR 25**  
Pin Plate (72 Pins)



**AR 26**  
Pin Plate (21 Pins)



**AR 27**  
Bottom Part with Sintered Sliding Pieces  
(small rivetted)



**AR 28**  
Bottom Part with Sintered Sliding Pieces  
(Small press fitted)



**AR 29**  
Bottom Part with Synthetic Sliding Pieces  
(Lubrication Free)

**ARTOS / BABCOCK**



**AR 30**  
Connecting Link for Impulse Lubrication



**AR 31**  
Connecting Link with Synthetic Bushes  
(Lubrication Free) (Bend Type)



**AR 32**  
Sprocket Wheel



**AR 33**  
Pin Off Protection (PEEK)

**HARISH**



**HR 01**  
Clip with Roller Feeler



**HR 02**  
Combined Pin & Clip with Roller Feeler



**HR 03**  
Pin Link (Long)



**HR 04**  
Pin Link (Short)



**HR 05**  
Complete Transport Chain with  
Sintered Sliding Pieces (small riveted)



**HR 06**  
Pin Plate (72 Pins) (10 Holes)



**HR 07**  
Pin Plate (44 Pins)



**HR 08**  
Sprocket Wheel



**HR 09**  
Clip with Roller Feeler



**HR 10**  
Combined Pin & Clip with Roller Feeler



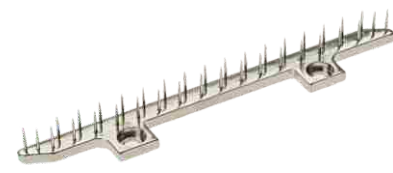
**BRUECKNER**



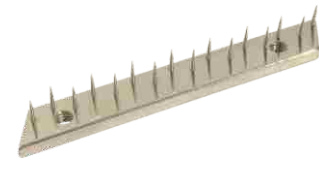
**BRUECKNER**



**BR 10**  
Pin Off Protection Device (Type 1)



**BR 11**  
Pin Plate (36 pins)



**BR 12**  
Pin Plate (16 pins)



**BR 13**  
Pin Link NG V with Pin Off Protection Device



**BR 14**  
Pin Link NG VII



**BR 15**  
Pin Link with Pin Off Protection Device (Type 2)



**BR 16**  
Pin Off Protection Device (Type 2)



**BR 17**  
Complete Transport Chain SK 969



**BR 18**  
Complete Transport Chain SK 912

**BRUECKNER**



**BR 19**  
Complete Transport Chain SK 999



**BR 20**  
Complete Transport Chain SK 943



**BR 21**  
Complete Transport Chain SK 976



**BR 22**  
Complete Transport Chain SK 977



**BR 23**  
Complete Transport Chain SK 932



**BR 24**  
Complete Transport Chain TN 77



**BR 25**  
Combined Pin & Clip KK III S



**BR 26**  
Pin Link NG VII modified (Steel)

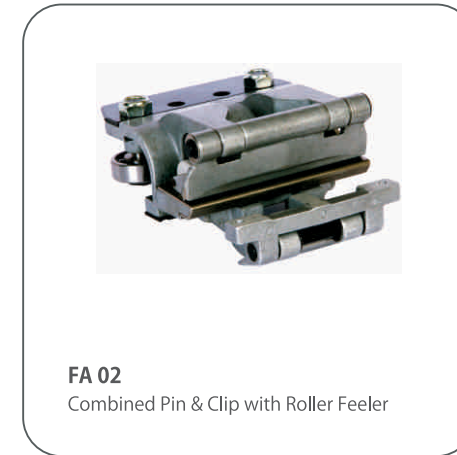


**BR 27**  
Combined Pin & Clip KK VIII

**BRUECKNER**



**FAMATEX**





**MONFORTS**

**MN 01**  
Clip With Roller Feeler

**MN 02**  
Combined Pin & Clip with Roller Feeler

**MN 03**  
Pin Link

**MN 04**  
Pin Link With Pin Off Protection Device

**MN 05**  
Transport Chain With Grease Nipple and Metalplast Bushes

**MN 06**  
Transport Chain With Torlon Bushes (Lube Free)

**MN 07**  
Transport Chain with Hylem Sliding Pads (Vertical)

**MN 08**  
Transport Chain With Synthetic Sliding Pads & Synthetic Bushes (Vertical) (Lubrication Free)

**MN 09**  
Pin Off Protection Device

**MONFORTS**



**MN 10**  
Baby Clip With Chain Link For Sanforizer



**MN 11**  
Pin Plates (25 Pins)



**MN 12**  
Pin Plate (40 Pins)



**MN 13**  
Baby Clip for Sanforizer



**MN 14**  
Connecting Link With Metaloplast Bushes



**MN 15**  
Connecting Link With Torlon Bushes



**MN 16**  
Toggle Cover (Type 1)



**MN 17**  
Toggle Cover (Type 2)



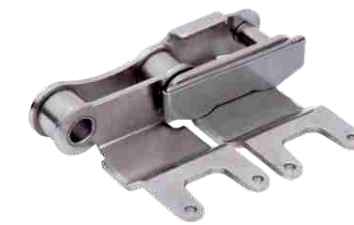
**MN 21**  
Connecting Link With Peek Bushes

**MONFORTS**

**BENNINGER**



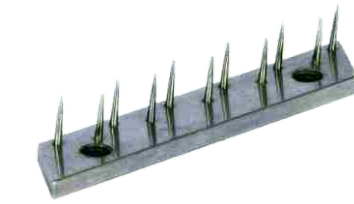
**MN 22**  
Pin Plate (70 Pins)



**BN 01**  
Complete Transport Chain (Type 1)



**BN 02**  
Complete Transport Chain (Type 2)



**BN 03**  
Pin Plate (11 Pins)



**BN 04**  
Brush with SS bristles



**BN 05**  
Sprocket Wheel (Type 1)



**BN 06**  
Sprocket Wheel (Type 2)

STENTEX



**ST 01**  
Clip With Roller Feeler



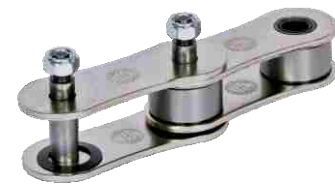
**ST 02**  
Combined Pin & Clip with Roller Feeler



**ST 03**  
Pin Link



**ST 04**  
Pin Link With Pin Off Protection Device for Horizontal Chain



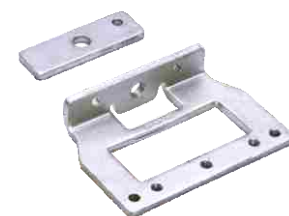
**ST 05**  
Complete Chain Assembly (Horizontal)



**ST 06**  
Pin Link With Pin Off Protection Device For Vertical Chain



**ST 07**  
Complete Chain Assembly (Vertical)



**ST 08**  
Steel Pin Link For Vertical Chain



**ST 09**  
Pin Off Protection Device (9 Fingers)

STENTEX



**ST 10**  
Pin Plate (40 Pins)



**ST 11**  
Pin Plate (30 Pins)



**ST 12**  
Toggle Cover (Type 1)



**ST 13**  
Toggle Cover (Type 2)



**ST 14**  
Pin Off Protection Device (10 Fingers)

**KRANTZ**



**KR 01**  
Clip with Roller Feeler



**KR 02**  
Combined Pin & Clip with Roller Feeler



**KR 03**  
Pin Link Light (Short)



**KR 04**  
Pin Link Heavy (Long)



**KR 05**  
Complete Transport Chain



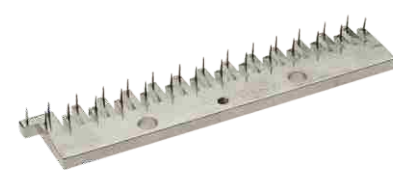
**KR 06**  
Pin Off Protection Device (6 Fingers)



**KR 07**  
Pin Off Protection Device (4 Finger)



**KR 08**  
Pin Plate (20 Pins)



**KR 09**  
Pin Plate (28 Pins)

**KRANTZ**



**KR 10**  
Connecting Link



**KR 11**  
Outer Link with 2 Welded Sliding Pads



**KR 12**  
Pin Link (Lube Type)



**KR 13**  
Pin Link With Peek Sliding Pads & Peek Bushes (Non Lube Type)



**KR 14**  
Krantz Locking Pin

**ILSUNG**

**FERRARO**

**SANTEX**

**ICOMATEX**

**LAFER**



**IL 01**  
Clip with Roller Feeler



**IL 03**  
Pin Link



**FR 01**  
Complete Transport Chain Assembly  
(Lube)



**SA 01**  
Complete Transport Chain Assembly



**IC 01**  
Chain Assembly



**L 01**  
Transport Chain



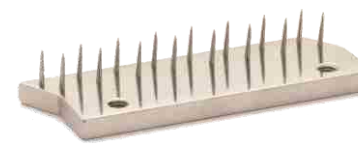
**IL 04**  
Complete Transport Chain (Type 1)



**IL 05**  
Complete Transport Chain (Type 2)



**FR 02**  
Complete Transport Chain Assembly  
(Lube Free)



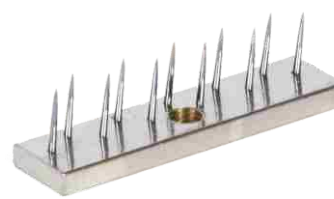
**SA 02**  
Pin Plate (16 Pins)



**IL 06**  
Complete Transport Chain (Type 3)

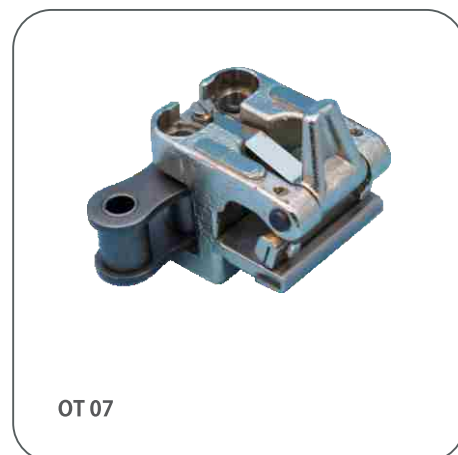


**IL 07**  
Pin Plate (38 Pins)



**BR 03**  
Pin Plates (11 Pins)

OTHERS



OTHERS



ARTOS / BABCOCK

HARISH

BRUECKNER

FAMATEX

MONFORTS

BENNINGER

STENTEX

KRANTZ

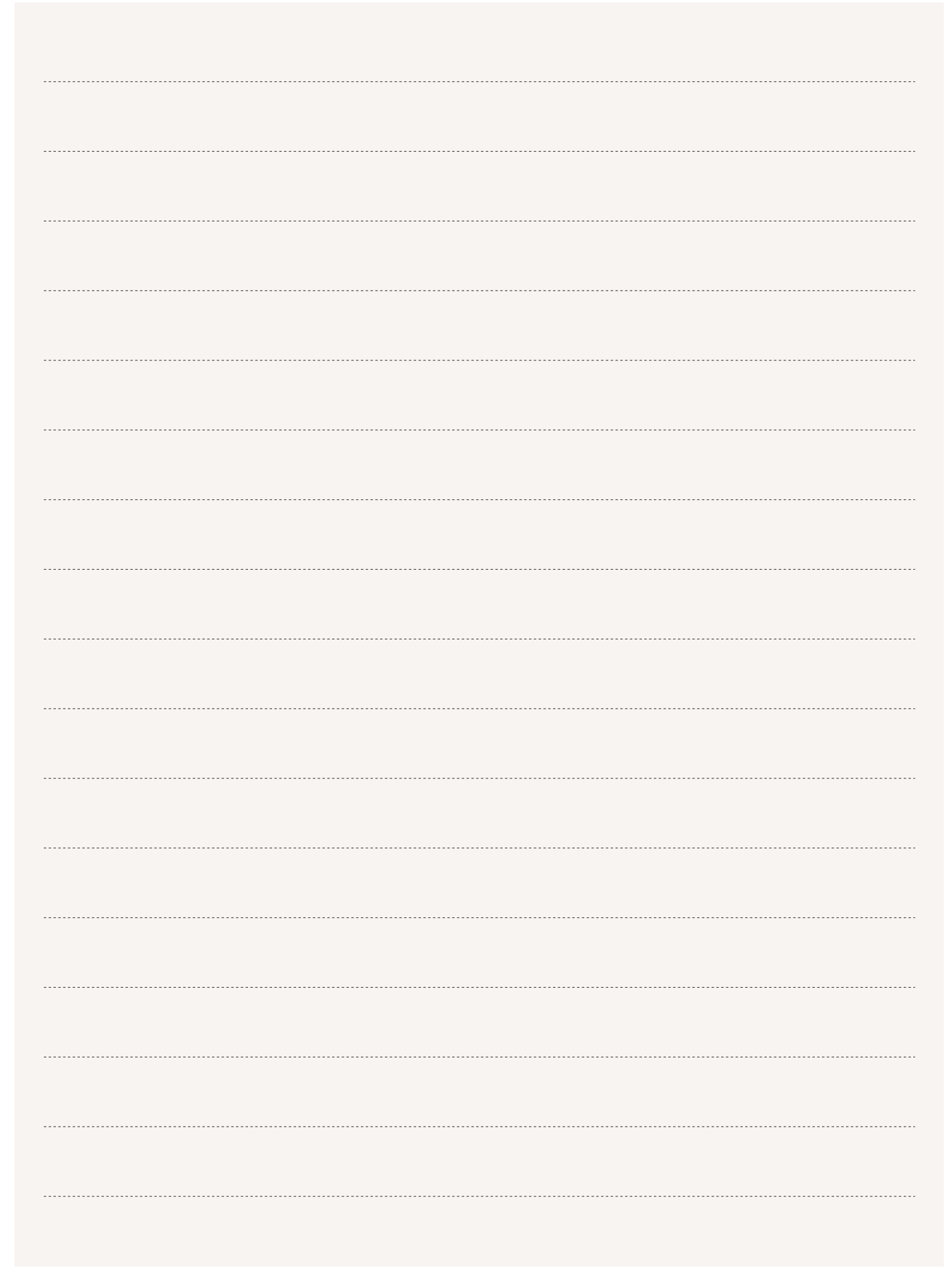
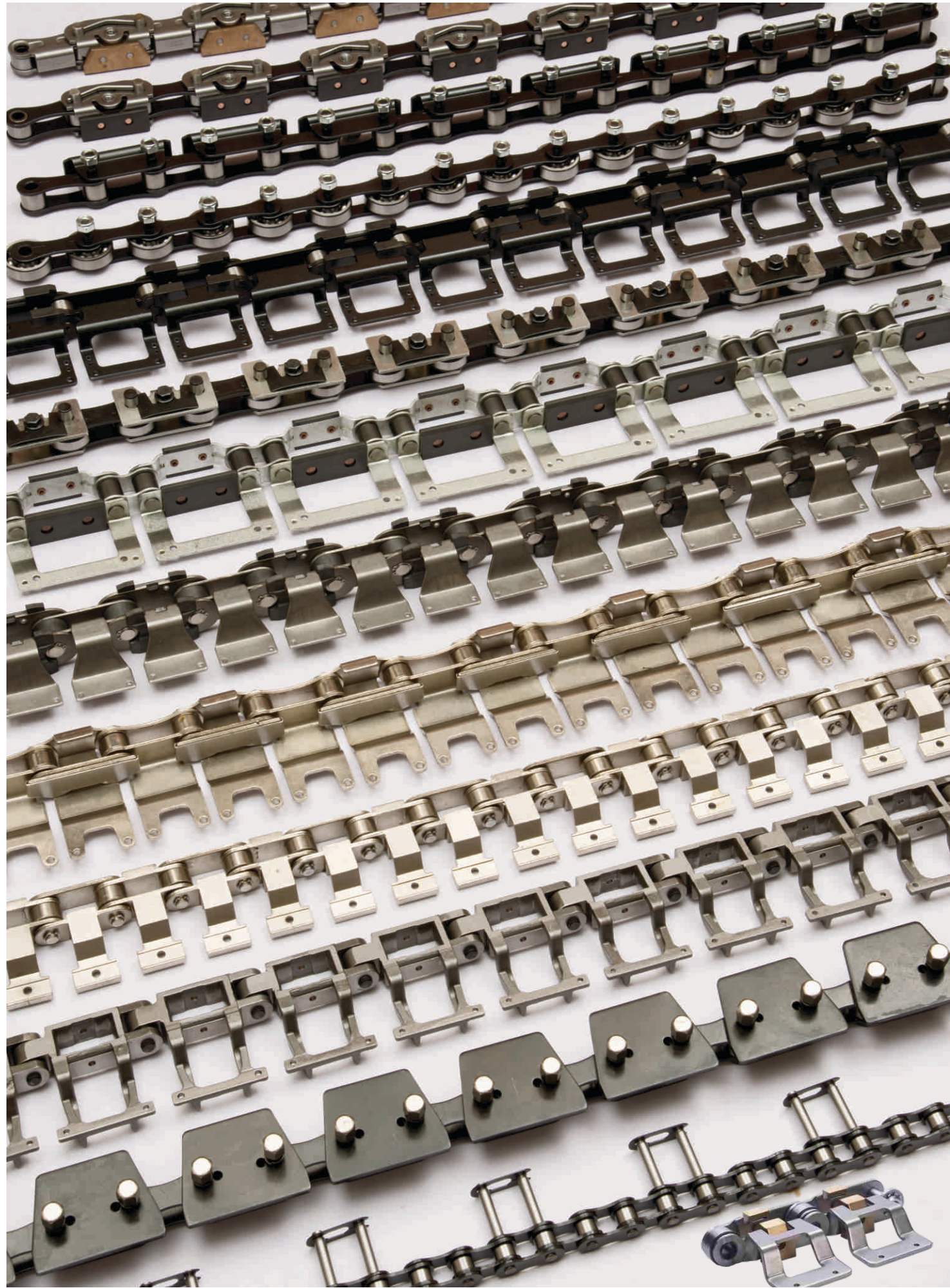
ILSUNG

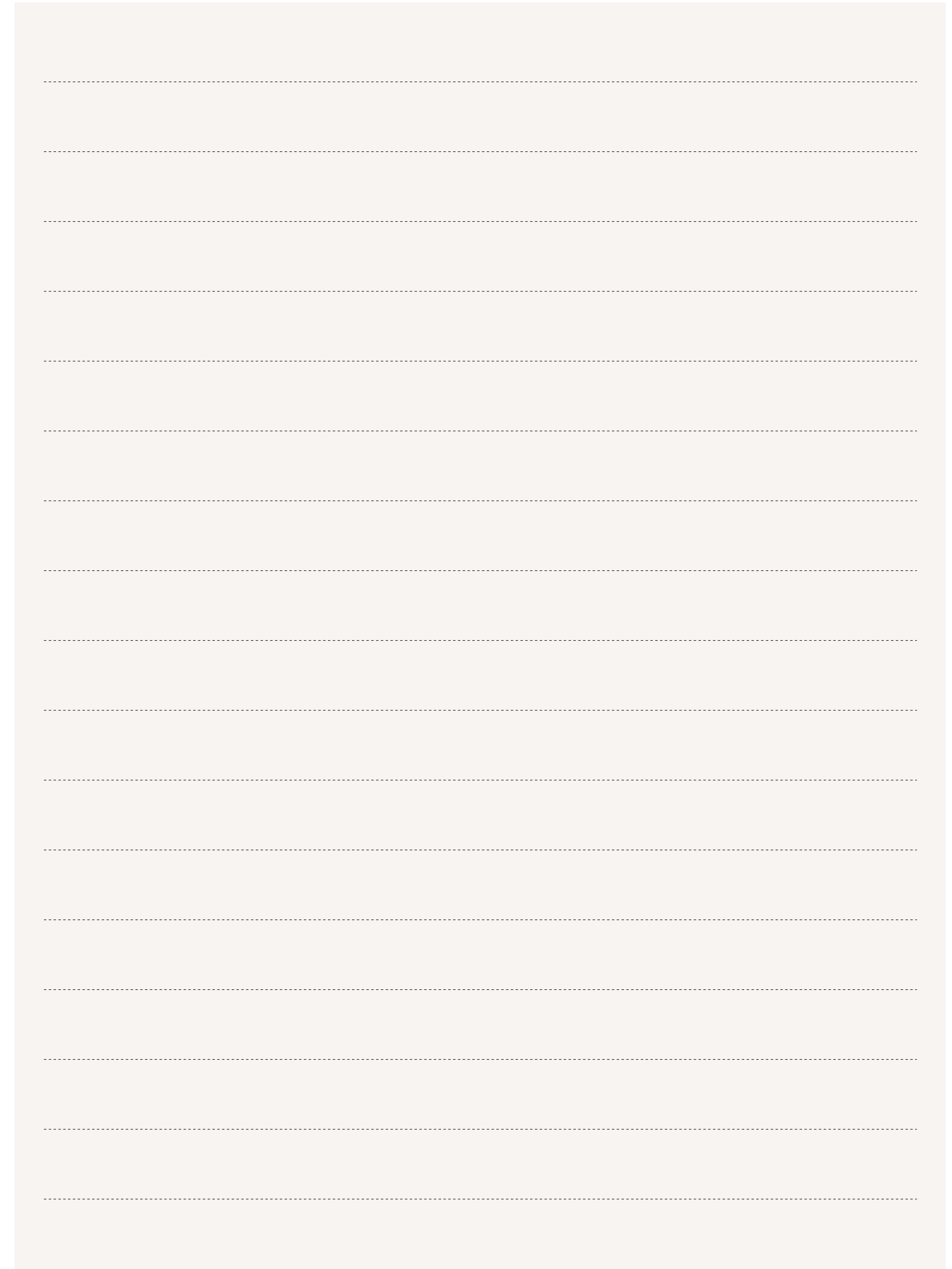
FERRARO

SANTEX

ICOMATEX


LAFER









**THAKER**  
Engineering Co. Pvt. Ltd.

 Regd. Office:  
F-7, Khira Industrial Estate, B. M. Bhargava Road, Santacruz (W), Mumbai-400 054, Maharashtra (INDIA).

 + 91 - 22 - 26616773 / 26614432  
+ 91 - 93245 33301

 [thaker.mum@gmail.com](mailto:thaker.mum@gmail.com)  [thakerindia.com](http://thakerindia.com)

 Works:  
Ranoli Station Road, Off. N.H. No. 8 , Padamla-391 350, Dist. Baroda, Gujarat (India).

 +91- 265 - 2240818 / 2242458  
+91- 98240 38698